

CT DEEP 2019  
FISHING REPORT NUMBER 29  
10/31/2019



Yellow Perch (*Perca flavescens*)



YOU CAN FIND US DIRECTLY ON FACEBOOK. This page features a variety of information on fishing, hunting, and wildlife watching in Connecticut. The address is [www.facebook.com/CTFishandWildlife](http://www.facebook.com/CTFishandWildlife).



We hope that you have been able to get out and fish throughout 2019 and will continue to fish as we have great opportunities 365 days a year here in Connecticut. This will be the last regularly scheduled full-size fishing report for 2019, however, we will issue additional reports as fishing conditions or events warrant. Your opinions matter to us, please share any feedback, comments, or suggestions on ways to improve our fisheries, via email at [deep.inland.fisheries@ct.gov](mailto:deep.inland.fisheries@ct.gov)

**THANK YOU!**

Stay in the know with CT Fish and Fishing Facebook Posts (@[CTFISHANDWILDLIFE](https://www.facebook.com/CTFISHANDWILDLIFE)). [Opt in](#) to the Monthly E-newsletter *CT Fishin' Tips*. **NEW CT DEEP Fishing Blog** – check out the [first installment](#)

## INLAND REPORT

*Providers of some of the information in this report included Bob's Place, Captain Morgan's Bait & Tackle, JT's Fly Shop, Yankee Outdoors, CTFisherman.com, and a number of bass fishing clubs & organizations.*

**ATLANTIC SALMON.** Stocking of our 2+ year old fish wrapped up last week with 112 fish stocked, 56 salmon went into the Naugatuck River and 56 into the Shetucket River. These salmon were 2-5 lb fish. Reminder that in the river sections it is **catch-and-release only through December 15** for Atlantic Salmon in the Naugatuck River, Shetucket and lower Housatonic rivers (*see page 5 for all the regulations for Atlantic Salmon*).

Some reports of nice catches are in from the Naugatuck River (Upper Broodstock Area) but on the Shetucket River, catches have been a challenge. Good luck!

**TROUT-STOCKING.** *DEEP wraps up its 2019 fall trout stockings this week.*

**The Trout and Salmon Public Forums** wrapped up on 10/22. Thank you to all who were able to come out and have productive discussion about preferences and desires. A web-based presentation is currently being planned for early to mid-November to reach out to all who were not able to make one of these meetings. Please stay tuned to this report and to our [Facebook Page](#).

**TROUT PARKS:** The **Great Hollow Pond** (350 9-12 inch Rainbow Trout), **Black Rock Pond** (350 9-12 inch Rainbow Trout) and **Wharton Brook Pond** (350 9-12 inch Rainbow Trout) Trout Parks were stocked this week.

**Note:** We are not allowed by state statute to release most stocking information ahead of time, however, as soon as we stock we get the word out via our [Facebook page](#) and have a list on our [web page](#). A very popular application is our [interactive trout stocking map](#), which shows the number of days since a waterbody was last stocked. A second popular use of this map is to find new places to fish.

**TROUT- RIVERS & STREAMS.** Conditions should be good for trout fishing this weekend. The forecast is for cool, dry weather and there are still plenty of stocked fish out there eager to please and anglers should take the opportunity to get outside and land some nice-looking Rainbows. Flows will however be on the high side due to all the recent rains (*see stream flow graphic on page 5 or check stream flows anytime for 68 USGS gauging stations at the [USGS web site](#)*). Please be sure to try a diversity of offerings as the fish may be a bit “picky”, small shiny lures, powerbait, mealworms, and a variety of streamers and nymphs should cover your bases. Anglers found some nice action in the Hammonasset River, Natchaug River, Scantic River and Farmington River last week and the Willimantic River has been spotty.

**Farmington River** – Fishing continues to be good to very good, and with good weather forecast for the weekend it’ll be a great time to get out on the river. Flows will be on the high side, currently flows have returned to normal levels following the heavy rains last week. Currently 209 CFS at Riverton plus another 305 CFS from the Still River (through Friday Still River flows may continue to increase depending on additional rainfall amounts in its watershed).

**Housatonic River** – Fishing has been good and flows had dropped from their high level a week ago, but were still a bit on the high side, currently 1,190 CFS at Falls Village and 1,390 CFS at Gaylordsville. Note that flows may increase again before the weekend (depending on further rainfall amounts). Anglers can call the **FirstLight Power Resources flow line at 1-888-417-4837 for updated river information or check the [USGS website](#)** for up to date real time streamflow data from a number of USGS gauging stations including two on the upper Housatonic River.

**Hatches/patterns.** Lots of different activity on the river. Key is to have a diverse box of sizes and colors. Patterns to try include Blue Wing Olive (#18-24, early morning; spinner fall in evening), Isonychia (#10-12 evening), Midges (#20-24) and Black caddis (#14-18, early morning & evening) and Light Cahill (#12-14). Patterns to try include White Zonkers, Woolly Buggers, Muddlers, Grey or Black Ghosts (#4-10), brown crayfish when nymphing the pockets, deeper riffles and pool heads.

**TROUT- LAKES & PONDS.** Anglers are really enjoying some very good action on large Brook Trout at Black Pond (Woodstock) and Mohawk Pond. Good reports from Crystal Lake last week but fish were difficult to coax into biting at Colebrook ?river Lake and both Bigelow Pond and Mashapaug Lake.

**LARGEMOUTH BASS** fishing continues to be generally slow to fair, and variable at many areas throughout the state. **Tournament angler** reports are from Aspinook Pond (fair to good), Coventry Lake (slow for most, 5.4 lb lunger), Mansfield Hollow Reservoir (on the tough side, 3.13 lb lunger), Bantam Lake (slow for most, 2.56 lb lunger) and Candlewood Lake (fair, 4.32 lb and 4.29 lb lunkers).

**SMALLMOUTH BASS.** Fishing for smallmouth is picking up throughout the state. **Tournament angler** reports are from Aspinook Pond (fair, 3.46 lb lunger), Bantam Lake (a few caught, 1.22 lb lunger) and Candlewood Lake (slow to fair).

**CHANNEL CATFISH.** Catfish are becoming more active, especially from about sunset to 9 pm. Places to try include Batterson Park Pond, Mohegan Park Pond, Wauregan Reservoir, Crescent Lake (Southington), Lake Wintergreen, Beardsley Park Pond, Stillwater Pond, Burr Pond, Silver Lake, Hopeville Pond, and Black Pond.

#### ZEBRA MUSSELS REMINDER

Zebra mussels are now found in a number of locations scattered throughout the Housatonic River and its impoundments including Lake Lillinonah (*since 2010*), Lake Zoar (*since 2010*) and Lake Housatonic (*since 2011*).

Prior to their discovery in Lakes Lillinonah and Zoar in 2010, zebra mussels had been found (1998) in CT only in East Twin Lake and West Twin Lake (Salisbury). Anglers fishing in any of these waters and western Connecticut in general **should use extra care to avoid transporting water, aquatic vegetation, and possibly zebra mussels to new locations.** Information

For more information including precautions that should be taken to prevent the spread of zebra mussels to additional waters, visit [www.ct.gov/deep/invasivespecies](http://www.ct.gov/deep/invasivespecies) or the Aquatic Invasive species section of the 2018 CT angler’s Guide( [www.ct.gov/deep/anglersguide](http://www.ct.gov/deep/anglersguide)).



**COMMON CARP.** Pre-baiting your area is key to bringing in lots of action. Good sized fish and numbers from the CT River, Lake Lillinonah and Batterson Park Pond.

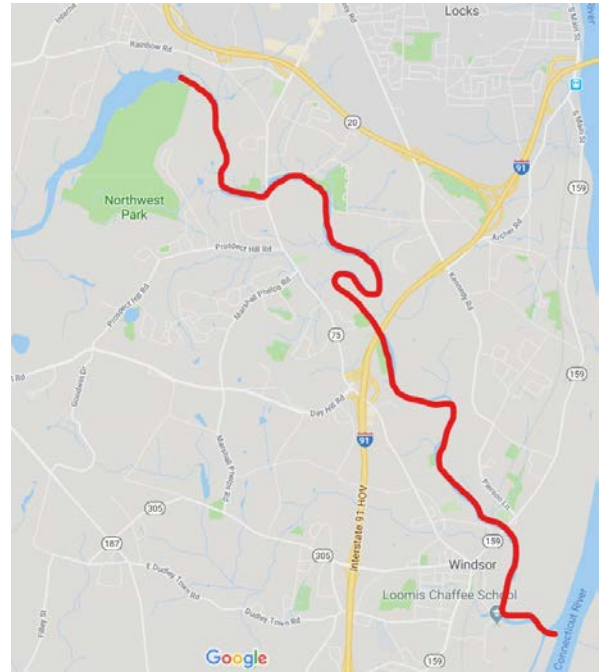
**NORTHERN PIKE.** Nothing reported to us again this week, good places to try include the deeper weedlines with a deeper swimming lure. Good pike places include the Pachaug River system (Ashland Pond, Hopeville Pond, Pachaug Pond), Bantam Lake, Lake Lillinonah, Lake Zoar, Winchester Lake and Mansfield Hollow Reservoir. Some nice pike can also be found in the small impoundments on the Housatonic River from Bulls Bridge up to Salisbury. **Several large fish (36-40 inches)** were netted during our night survey on Lake Lillinonah last week.

**WALLEYE.** Late evenings and nighttime are generally the best for Walleye fishing. Places to target the walleye include Squantz Pond, Beach Pond, Coventry Lake, Gardner Lake, Mashapaug Lake, Mount Tom Pond, Saugatuck Reservoir, Lake Saltonstall and Batterson Park Pond.

**CONNECTICUT RIVER.** Flows in the river are at 15,400 (Thompsonville), and very good to fish and boat. Good action for **catfish** (Whites and Channels) throughout the river, especially in the Glastonbury and Middletown areas. For catfish, fish the deep holes by day and the adjacent shallow flats by night. Fishing for **Largemouth Bass** was very slow in the Salmon River Cove/Haddam Meadows area. **Smallmouth Bass** were hard to find in the Enfield area and some decent **Common Carp** action is being found throughout the river as the participants in the CT CARP OPEN are wrapping up their 3.5 days of fishing on Friday. Good reports for **Northern Pike** (but mostly smaller fish) from the Haddam area. **Walleye** in the Enfield area.

**REVISED IMPORTANT NOTICE - Updated 10/18/2019** - Please note that an accidental release of fire-fighting foam from a hangar at Bradley International Airport on June 9 resulted in an advisory to **not eat fish caught from the Lower Farmington River (downstream of Poquonock Avenue in Windsor (Rte. 75)), which remains in effect until further testing from a second round of samples are completed and results analyzed.**

**This advisory was revised** to address the potential discharge on October 2, 2019 of firefighting foam into the Farmington River in Windsor originating from the Bradley International Airport plane crash emergency response efforts via Rainbow Brook. **The public is advised to not come into contact with foam they may encounter on the lower Farmington River or along its banks downstream of the Rainbow Dam, as well to not take or consume fish from this section of the river.** This advisory will remain in place while officials evaluate the potential impacts to the watershed.



*Section of the lower Farmington River possibly affected by the firefighting foam release in early June as well as emergency use of the foam during the plane crash response on October 2, the area remains under a cautionary advisory.*

**NOTES & NOTICES:**

**WEST BRANCH RESERVOIR, WEST BRANCH FARMINGTON RIVER & COLEBROOK RIVER LAKE.** The water level in West Branch Reservoir has been lowered 70 feet from its usual elevation by MDC to facilitate the U.S. Army Corps of Engineers' (COE) repairs to Colebrook Dam's outlet structures and equipment. The repairs will begin and are anticipated to last two to three months. During this period flows in the West Branch Farmington River are expected to stay within typical levels dependent on precipitation amounts and water level manipulations of impoundments (especially Otis Reservoir) upstream of Colebrook River Lake and impoundments (such as Highland Lake) on tributaries. Recreational opportunities at Colebrook River Lake should be unaffected but will be severely limited at West Branch Reservoir during the repair project and drawdown.

Once the repairs to the Colebrook River Lake dam infrastructure are completed, refill of West Branch Reservoir is expected to take approximately 35 days. Downstream flows during this time are expected to stay within typical levels during refill.

**CANDLEWOOD LAKE (safety buoy removed).** The Candlewood Lake Authority has removed the hazard, navigation and speed buoys for the winter. Boaters, especially those unfamiliar with the lake should use extra caution out on the lake.

**CONNECTICUT RIVER (invasive species alert).** In 2016 hydrilla was found in the main stem Connecticut River in Glastonbury (near Glastonbury's Riverfront Park & Boathouse). **Hydrilla has now spread throughout the river and can be found in numerous areas.** See the Coventry Lake entry on the next page for what river users should do to prevent spread of this invasive plant to other waterbodies.

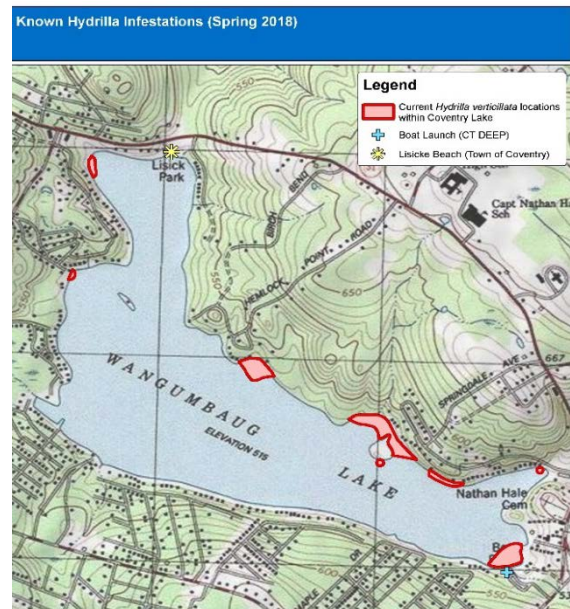
**COVENTRY LAKE (invasive species alert).** Hydrilla, a very highly invasive aquatic plant, has been found growing in Coventry Lake. All lake users should take extra care to check and clean their boats (including canoes, kayaks and rowing sculls), trailers, and fishing equipment before leaving the launch.

**QUADDICK LAKE (launch access).** The lake has been drawn down several feet and the park gates have been closed for the season to vehicular access.

**STANLEY QUARTER PARK POND (drawdown).** A 2-3 foot drawdown for dam repairs continues. Accessing the water may be limited.

**UPCOMING DRAWDOWNS.** In western CT, the drawdown of **Lake Zoar** is nearing completion with refill scheduled to begin on November 1. **Lake Lillinonah** is scheduled for a drawdown from November 2 to November 11, the launching of trailered boats from the Route 133 state boat launch will be difficult and launching from the Pond Brook boat launch is likely not possible during this drawdown. Additionally the winter drawdown of **Highland Lake** is scheduled to start in early November. In eastern CT, winter drawdowns of **Bashan lake, Beach Pond, Beseck Lake, Middle & Lower Bolton Lakes, Gardner Lake, Glasgow Pond, Mashapaug Lake and Pachaug Pond** are scheduled to begin in early November.

**FISHING SEASONS.** Anglers are reminded that the fishing season at several lakes and ponds scattered throughout the state closes on November 1, **most notably LAKE WONOSKOPOMUC, GREEN FALLS RESERVOIR and SHENIPSIT RESERVOIR.** Please refer to the 2019 CT Fishing Guide for additional locations.



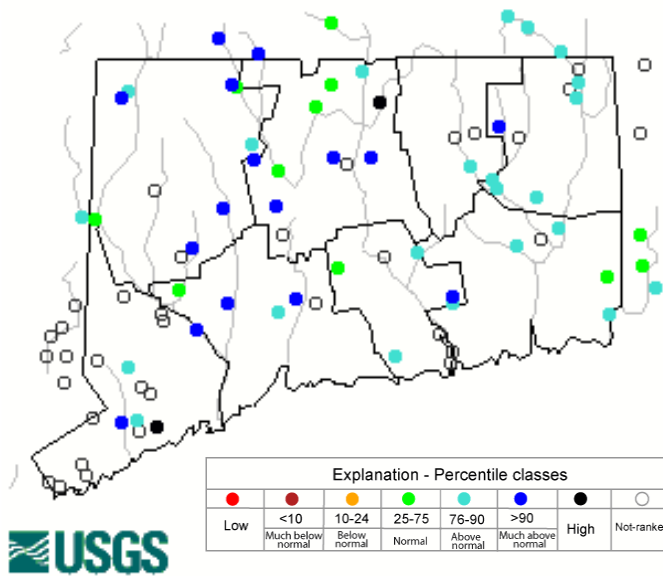
*Known locations of hydrilla at Coventry Lake (Wangumbaug Lake). Boaters should avoid these areas noted with red to avoid fragmenting and spreading hydrilla.*

### Atlantic salmon fishing regulations and areas summary

- **Regulations for Atlantic salmon on the Shetucket and Naugatuck Rivers.** In the Naugatuck, Housatonic and Shetucket Rivers, from September 1 through December 15, angling for Atlantic salmon is restricted to **catch-and-release only**. From December 15, 2019, through March 31, 2020, the daily creel limit for Atlantic salmon will be one. During the open season in the rivers, the legal method for taking Atlantic salmon is limited to angling using a single fly, or an artificial lure with a single free-swinging hook and no additional weight can be added to the line above the fly or lure. Also, from September 1<sup>st</sup> through March 31<sup>st</sup>, fishing for other species in the designated Atlantic Salmon Management Area is restricted to the gear legal for Atlantic salmon.
- On the **Shetucket River**, anglers can fish for salmon downstream from the Scotland Dam (Windham) to the Water Street Bridge in Norwich (the first bridge upstream of Norwich Harbor). The salmon are stocked into one designated Atlantic Salmon Management Area, from the Scotland Dam to the Occum Dam.
- Anglers are allowed to fish for salmon in the **Naugatuck River** from the confluence of the East and West Branches (Torrington) downstream to the Housatonic River (Derby). Anglers may also fish for Atlantic salmon in the Housatonic River downstream of Derby Dam. The salmon are typically stocked into two designated Atlantic Salmon Management Areas on the Naugatuck River, the “Campville Section” of the upper Naugatuck River from Route 118 downstream to the Thomaston Flood Control Dam (Litchfield-Thomaston) and the “Beacon Falls Section” of the lower Naugatuck, from Prospect Street (Naugatuck) downstream to Pines Bridge Road (Route 42 bridge, Beacon Falls). From September 1<sup>st</sup> through March 31<sup>st</sup>, fishing for other species in these designated Atlantic Salmon Management Areas is restricted to the gear legal for Atlantic salmon.
- The regulations for Atlantic salmon released into lakes and ponds are different from the regulations for salmon on the Naugatuck and Shetucket Rivers. **In each lake, the regulations for methods, seasons and minimum lengths for salmon will be the same as for trout in that specific water body but the daily creel limit will be one salmon per day.** (Please refer to the 2019 CT Fishing Guide for trout regulations).

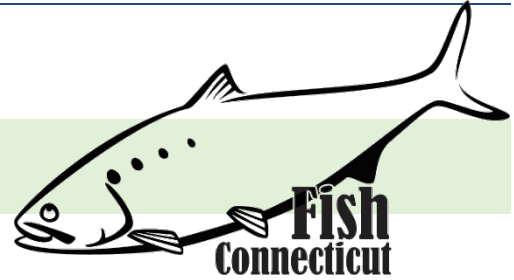
### Stream flow conditions

Thursday, October 31, 2019 18:30ET



Data in the state graphic to the left are generated by the United States Geologic Survey (USGS) and are available on line at: <http://waterdata.usgs.gov/ct/nwis/rt> A percentile is a value on a scale of one hundred that indicates the percent of data in the data set equal to or below it. For example streamflow greater than the 75<sup>th</sup> percentile means only ¼ of the streamflow values were above the value and thus would be considered “above normal”. Stream flow between the 25<sup>th</sup> and 50<sup>th</sup> are considered to be “normal flows” and those 25<sup>th</sup> or less are considered to be “below normal”.

## MARINE FISHING REPORT



Surface water temperatures in Long Island Sound (LIS) are in the mid 50's °F. Check out the following web sites for more detailed water temperatures and marine boating conditions:

<http://www.mysound.uconn.edu/stationstat.html>

[http://marine.rutgers.edu/mrs/sat\\_data/?nothumbs=1](http://marine.rutgers.edu/mrs/sat_data/?nothumbs=1)

<http://www.ndbc.noaa.gov/>

<http://www.wunderground.com/MAR/AN/330.html>

---

**NOTE ON TAUTOG SURVEY:** Some of you may have recently become aware of an online survey being conducted by researchers at UConn and CT Sea Grant concerning tautog recreational fishing regulations in Long Island Sound. While CT DEEP supports this research project and encourages CT anglers to participate, **we would like to assure anglers that there are no plans to change tautog regulations in the near future.** Current regulations will remain in place until the Atlantic States Marine Fisheries Commission conducts its next tautog stock assessment (currently scheduled for 2021). If you have questions about the survey, or would like to take the survey, please contact Eric Schultz at [eric.schultz@uconn.edu](mailto:eric.schultz@uconn.edu)

### IMPORTANT REMINDERS for ANGLERS:

- **SEE A TANGLED TURTLE? CALL THE HOTLINE! 1-860-572-5955 ext. 107.** This is the time of year when leatherback, loggerhead, green, and Kemp's Ridley sea turtles return to northern waters, with many sightings around Long Island Sound.
- 

**TAUTOG** fishing is good. Anglers have noted plenty of shorts (good sign) with some keeper-sized fish. Several of Connecticut's outstanding and knowledgeable bait and tackle shops weighed in blackfish this week from 8 to 14.25 pounds. An 11.25 Lb. weight was certified at a New London bait shop. In fact, a 12-pounder reportedly caught from shore was phoned in, but could not be verified. At the start of the run its best to fish for togs in shallow water (10-30 feet) but as the water temps cool togs will move into deeper water. Shore anglers are still catching togs with the recommended jig set-up with a 1/4 to one ounce weight and 30-40 pound braided line. Some anglers are catching blackfish with worms but it's an arduous process weeding out the scup from competing for the worms. Boaters are having success just south of **Two Tree Island**, also at the three breakwaters to New Haven Harbor entrance, and in rocky reefs, drop-offs, old wrecks and rock outcroppings. You'll want to anchor once you find a good tautog site, and you'll know a good site because togs will hit within 10-minutes. If you don't get a hit within 10-minutes it's time to move on or start chumming. It's wise to invest in a reef or grapnel anchor. As pointed out by a tackle shop located in Waterford, it's very tempting to join a large party of boats all targeting blackfish in the same area. It must be a red hot tautog spot, right? Wrong! The largest togs will be caught in short time, and once all of the legal-sized togs are caught - they're gone. Time to move on....togs won't repopulate that same reef or structure until next spring. Togs are territorial and new fish won't move in to that specific spot. If you're catching a ton of shorts, those are fish that have been caught and released at the site, but the big ones on the structure are now gone. So it's best to venture out on your own and to stay away from the pack. Check each and every reef or rock pile. As of October 31, tautogs are still inhabiting **Cockenoe Island** as well, the south side of **Sheffield Island**, **Bartlett's Reef**, **Six-Mile Reef**, **Darien's Fish Island**, **Greens Ledge** and **Peck's Ledge Lighthouses**. Or you can simply

patronize your [local bait and tackle shop](#) where they are fully stocked with tautog gear and bait. I would also highly recommend planning a trip on a [party/charter boat](#) trip to fish for these hard-fighting good eating fish.

**ATLANTIC BONITO & LITTLE TUNNY** fishing remains good. False albacore (little tunny) fishing is still productive. The bite is on! These little tunas are so powerful and fast that they have been a favorite targeted species this fall - and they seem to love eastern Connecticut with no sign of departure anytime soon. Spanish mackerel are also mixed in the school, along with Atlantic bonito. Swedish Pimples (in purple) is the new hot lure this week. They are also snatching up Deadly Dicks, Albie Snacks, Epoxy Lures and Sluggos. The schools do not like to linger in one spot as they constantly chase bait, but they are being caught consistently at **Ocean Beach, Waterford Beach, mouth of the Thames River, Compo Beach, Norwalk Islands, Penfield Reef, the West end of the Sluiceway and Plum Gut, off New Haven Harbor and Sandy Point Beach, Harkness Memorial State Park and off of Saybrook Point**. Fishermen in their kayaks seem to be doing the best. Be safe and pick a good weather day. Watch for diving birds and try to get a feel of which direction the false albacore are moving. If you fish for them long enough you start to get a 7th sense of where they will be headed.

**STRIPED BASS & BLUEFISH** fishing is good. Boaters are still getting their keep between **Great Gull Island and Plum Island**. Live-lining and using fresh bait is working well in the shallows at the **Sluiceway which is located west of Orient Point, Long Island**. Two anglers this week alone caught 25 bluefish on Diamond Jigs at the west end of the Sluiceway by Plum Gut. Striped bass holdovers and schoolies are getting a strong hold in our rivers and estuaries and settling in for the winter. Others (migratory bass) are on their way, migrating south for the winter. They are pushing up small bait in very close to shore, and the stripers are also hitting metals; spoons, castmasters, top-water plugs, rattle-traps, pencil poppers, jigging spoons and crankbaits. **Mouth of the Thames River and its banks, Connecticut River, Norwalk and Mianus Rivers and the Housatonic** are all hot spots this week. Anglers at **CT DEEP Marine Headquarters** had a field day last weekend at the fishing pier. Bluefish are still chomping on everything and schools are scattered around the Sound. Shore anglers are bending rods off **Pier Tree Point Beach in Darien, off Calf Pasture Beach Pier and sandbar, Silver Sands, Sherwood Island, Hammonnasset, Rocky Neck and Fort Trumbull State Parks** are all seeing their fair share of bluefish. **Walnut Beach, Todd's Point, Cummings Park, Seaside Park, Fort Nathan Hale, and Compo Beach** are all attracting bluefish.

*Don't have a Boat? Hook up with the many [Party or Charter Boats](#) found throughout CT's shoreline from Greenwich to Stonington.*

Please use circle hooks when fishing with bait (live or dead), prevent gut hooking and also practice catch & release.

**BLACK SEA BASS & SCUP** fishing is still phenomenal. Scup and black sea bass fishing still very strong, especially in the **Block Island Sound** area. The Porgy hangouts include areas such as **Southwest Reef off of Westbrook as well as Green can "C" near Stratford Shoal Lighthouse, Short and Long Beach in Stratford, the Stratford Wall, Calf Pasture Pier, Pleasure Island Family Pier, Todd's Point, Six-mile Reef, Two Trees Island, Fort Trumbull State Park Pier, Harkness Memorial State Park, Sherwood Island State Park, Silver Sands State Park, Bonds Dock, South Benson/Ash Creek, Saint Marys by the Sea, New London's Waterfront Park, Southport Harbor, the Wall at Stratford, buoy 32-A, Greens Ledge Lighthouse** and a plethora of other sites are still holding scup with some black sea bass mixed in. A high-low rig tipped with squid and/or clams will do the trick. If you're fishing **Fishers Island** you may have to compete with the large number of seals that have moved in. Locate your favorite [Enhanced Shore Fishing Opportunities](#) for these hard fighting and excellent eating "Reef Slammers".

**HICKORY SHAD** fishing is good in the **Black Hall River/Lieutenant River, Gulf Pond ( Buckingham Bridge), lower Housatonic River and the lower Connecticut River (DEEP Marine Headquarters fishing pier)**. Fishing remains good at **Fort Trumbull, Black Hall, Clinton Harbor River systems and Black Rock Harbor**.

**WHITE PERCH** fishing is good. Spots include the Pawcatuck River (Stanton Weir Pit/Point), Mystic River, upper Thames River (Norwich Harbor) and Niantic River, lower Connecticut River (DEEP Marine Headquarters fishing pier), Black Hall River, Lieutenant River, North/South Cove and Hamburg Cove. **Grass shrimp and or a small piece of sandworm fished on the bottom are the keys to success.** You can collect grass shrimp with a minnow net along the shoreline where marsh/eel grass is growing or along dock pilings. They love to cling to the grass or dock pilings.

**SHARK SPECIES YOU MAY ENCOUNTER IN COASTAL WATERS OF CONNECTICUT** - Anglers may catch Sand Tiger and Sandbar (Brown) Shark which are protected and prohibited species and must be released unharmed. **IF YOU DON'T KNOW, PLEASE LET IT GO!** [Coastal shark information.](#)

### NOTABLE CATCHES

Species	Length (in.)	Weight (lbs)	Angler
Tautog	27"	11 lbs 14 ozs	Margaret Liberty
Tautog	22.75"	8 lbs 8 ozs	Thomas St Cyr.
Oyster Toadfish	15"	1 lb 14 ozs	Marina M.
Inshore Lizardfish	9"	C&R	Jake Weber

### CAUGHT A TROPHY FISH – CLICK HERE FOR THE MARINE TROPHY FISH AWARD PROGRAM AFFIDAVIT

- **CONNECTICUT STATE BOUNDARY LINE IN LONG ISLAND SOUND.** Anglers please note, although Connecticut has reciprocity with neighboring states (New York, Rhode Island, Maine and Massachusetts), residents of Connecticut are required to have a CT Resident Marine Waters Sport Fishing License to fish in the Marine District.
- **CT TIDE INFORMATION** can be found on page 64 of the [2019 CT Fishing Guide](#).
- **FISH RULES APP** Fish Rules is a totally new and innovative way to understand recreational saltwater fishing regulations for state and federal waters from Maine to Texas.

**PLEASE CALL 1-800-842-4357 TO REPORT FISHING VIOLATIONS.**

*For Current Connecticut Recreational Fishing Regulations:* Anglers should consult the 2019 Connecticut Fishing Guide which is now available at most Town Clerks Offices, DEEP offices and at tackle stores selling fishing licenses. Current regulations, electronic versions of the Fishing Guide and additional information can all be accessed on the DEEP website at: [www.ct.gov/deep/fishing](http://www.ct.gov/deep/fishing).

The Connecticut Department of Energy and Environmental Protection is an Affirmative Action/Equal Opportunity Employer that is committed to complying with the requirements of the Americans with Disabilities Act. Please contact us at (860) 418-5910 or [deep.accommodations@ct.gov](mailto:deep.accommodations@ct.gov) if you have a disability and need a communication aid or service; have limited proficiency in English and may need information in another language; or if you wish to file an ADA or Title VI discrimination complaint.

### DEEP WEEKLY Fishing Report



Connecticut Department of  
ENERGY & ENVIRONMENTAL PROTECTION

79 Elm Street, Hartford, CT 06106

[www.ct.gov/deep](http://www.ct.gov/deep)