

CT DEEP **2017**
FISHING REPORT NUMBER 18
8/10/2017



Fallfish (*Semotilus corporalis*)



YOU CAN FIND US DIRECTLY ON FACEBOOK. This page features a variety of information on fishing, hunting, and wildlife watching in Connecticut. The address is www.facebook.com/CTFishandWildlife.



INLAND REPORT

LARGEMOUTH BASS fishing continues to be fair to good. Night fishing is good, try black jitterbugs and surface poppers. Places to try include Candlewood Lake (flipping weeds daytime, pinner baits and Jig & pigs working at night), Lake Lillinonah (topwater first thing in morning), Bantam Lake, Mudge Pond, Hatch Pond, Park Pond, Lake Wononskopomuc, Lake Saltonstall, Bishop Swamp, Highland Lake, Lake McDonough, Winchester Lake, Congamond Lakes, Quinebaug Pond, Black Pond (Meriden), Burr Pond, Tyler Lake, Griggs Pond, Crystal Lake, Billings Lake, Pickerel Lake, Moodus Reservoir, Aspinook Pond, Quaddick Lake, Babcock Pond, Pachaug Pond, Lake Hayward, Quonnipaug Lake, Rogers Lake and Stillwater Pond.

Tournament angler reports are from Aspinook Pond (fair to good, 4.04 lb and 3.5 lb lunkers), Rogers Lake (good for some, tough for some, 5.0 lb and 4.93 lb lunkers), Bantam Lake (5.27 lb lunker), Candlewood Lake (fair to good, 5.05 lb, 4.0 lb and 3.8 lb lunkers), East Twin Lake (fair), Winchester Lake (fair for most, very good for a few, 6 lb lunker), and the Connecticut River (good action, 3.49 lb lunker).

SMALLMOUTH BASS. Action reported from Candlewood Lake (look around humps), Lake McDonough, Squantz Pond, Lake Zoar and Lake Lillinonah. Some very good reports in for river smallmouth from the upper Housatonic River, also some action on the Quinebaug River and the Naugatuck River.

Tournament angler reports are from Aspinook Pond (some fish, 2.8 lb lunker), Candlewood Lake (good for those targeting smallies, including a 5.66 lb lunker), and the Connecticut River (fair action).

KOKANEE SALMON catches were reported from East Twin Lake (mostly 12 inch fish) and West Hill Pond (early and at night, fishing with corn).

THIS SATURDAY IS A FREE FISHING LICENSE DAY

The second 2017 (and final) Free Fishing License Day is Saturday, **August 12, 2017** (and also the day of the NCLI/DEEP CARE program Saltwater fishing event at Fort Trumbull State Park – see page 6 for more information on this event). **Anyone can obtain a free one-day fishing license to fish this day.**

The free 1-day license can be obtained through our mobile friendly site at www.ct.gov/deep/sportsmenlicensing and at the same vendors ([Designated vendor \(tackle shop\)](#)), Town Halls and DEEP offices where other licenses are available ([DEEP Offices](#)).



WALLEYE. No reports this week, places to try include Lake Saltonstall, Saugatuck Reservoir. Squantz Pond, Batterson Park Pond, Beach Pond, Cedar Lake, West Thompson Lake, Mount Tom Pond, Gardner Lake, and Mashapaug Lake.

NORTHERN PIKE. Places to try for pike include Bantam Lake, Lake Lillinonah, Pachaug Pond, Mansfield Hollow Reservoir, Quaddick Lake (try up in Stump Pond), Hopeville Pond, the Connecticut River, the Housatonic River (Bulls Bridge area), and Winchester Lake. Weedlines early and late in the day typically hold pike.

CHAIN PICKEREL are keeping anglers busy throughout the state, with some big fish reported from Congamond Lakes and Bantam lake.

PANFISH. Fishing is very good. For some great summer time fun try shore fishing in shallow areas (your local ponds are often great places). Small grubs, worms or shiners and bobber will put fish in your creel. Small spinners and jigs have been very productive as well. Try small fly rods. Many of your local small ponds can provide great action. Larger waters to try include Mono Pond, Shenipsit Lake, Mohegan Park Pond, Morey Pond, North Farms Reservoir, Long Pond, Ross Pond, Babcock Pond, Mono Pond, Halls Pond, Barber Pond, Farmill Reservoir, Schreeder Pond, Roseland Lake, Norwich Pond, Peck Pond, Quaddick Reservoir, Zemko Pond, Wood Creek Pond, Park Pond and Stanley Quarter Pond. **Black Crappie** continue to provide action. Giant **Yellow Perch** are being caught at Candlewood Lake.

Check out and download the FREE- CARE “Let’s Go Fishing” Workbook available on the DEEP website at www.ct.gov/deep/care.

TROUT- RIVERS & STREAMS. Conditions for trout fishing are fair to good so far this August, the mostly moderate temperatures continue and flows are generally around typical early-mid August levels (*see stream flow graphic on page 6*). A few decent fish are still coming out of our larger rivers like the Quinebaug River, The West Branch Farmington River, Farmington River, Housatonic River, Hammonasset River, Natchaug River, Mount Hope River, Salmon River and Willimantic River. Terrestrial fly patterns (beetles, ants, and grasshoppers) are very important this time of the year and anglers are advised to include them in their offerings.

Farmington River – Fishing remains very good and forecast conditions should be good again for this weekend. West Branch flows are clear, moderate and just continue to be very fishable (currently 256 CFS at Riverton, with the Still River adding 25 CFS) and morning water temperatures

ZEBRA MUSSELS REMINDER

Zebra mussels are now found in a number of locations scattered throughout the Housatonic River and its impoundments including Lake Lillinonah (since 2010), Lake Zoar (since 2010) and Lake Housatonic (since 2011).

Prior to their discovery in Lakes Lillinonah and Zoar in 2010, zebra mussels had been found (1998) in CT only in East Twin Lake and West Twin Lake (Salisbury). Anglers fishing in any of these waters and western Connecticut in general **should use extra care to avoid transporting water, aquatic vegetation, and possibly zebra mussels to new locations.** Information

For more information including precautions that should be taken to prevent the spread of zebra mussels to additional waters, visit www.ct.gov/deep/invasivespecies or the Aquatic Invasive species section of the 2017 CT angler’s Guide (www.ct.gov/deep/anglersguide).

REMINDER TO ANGLERS-

FISHING IN OR CASTING INTO PERMITTED SWIM AREAS IS PROHIBITED.

State regulations prohibit fishing in or into a swim area that has been permitted by DEEP. Additionally, vessels cannot be operated within a permitted swim area, and there’s a 100 foot “no-wake” zone around the perimeter. Swim areas that have been permitted by DEEP will be marked by white buoys with orange markings, and there should be a permit number posted on the buoys. They may or may not have small orange barrier floats to further demarcate the area. Should questions arise concerning the validity of the swim area (*no permit numbers or the area appears to have been changed/enlarged or keeps moving*), please contact DEEP’s Boating Division at 860-434-8638.



ranging from the mid to upper 50's °F below the dam to the mid 60's °F through New Hartford.

Rock Snot is still "blooming". *Cymbella janischii* is a close relative of *Didymo* and has been introduced to the West Branch Farmington River (first noticed in 2011). *C. janischii* is native to the Pacific Northwest and not naturally found on the Eastern seaboard.

Currently this type of "Rock Snot" is very abundant and should continue to grow through July. The primary area of the river is from New Hartford upstream to Riverton. Note: *Didymo* is still present primarily in the West Branch above the Still River in Riverton. To help prevent the spread to other rivers and streams, all anglers should take extra care to clean and dry waders that have been in contact with rock snot. **We recommend having a pair just for use only in the Farmington River.**

Hatches/patterns include include *Isonychia* (#10-14, fast water), Summer and Winter Caddis (#18-24, good all day), Needhami (#24-26), Cahill & Light Cahill (#12-14), March Brown nymphs (#10-12), Blue Wing Olives (#18-20, also some smaller ones, #22-24, in the evening), Sulphur (#16-18, only up in the Riverton- Hogback Dam area), Black Ants (#14-18, midday in fast water), Black Beetles (#12-16, midday), Flying Ants (#18-22, midday, when windy/humid), and Midges (#20-32, morning). Summertime terrestrials (beetles, ants, and grasshoppers) are the go to throughout the day and nymphing/streamers from late morning to early evening.

Housatonic River – Fishing has been good and conditions for the weekend should be good. Flows are clear, a bit below typical mid-August levels (currently 258 CFS at Falls Village and 406 CFS at Gaylordsville), and are just perfect for wading. Morning water temperatures continue in the upper 60's °F. On hotter days switch from trout to **Smallmouth, Pike, Fallfish, and Carp**, they're on fire now hitting a variety of poppers and streamers.

Hatches/patterns include the **White Fly hatch** with some Alder/Zebra Caddis (#8-10, Alder flies are very active during hot days), Sulphurs (#14-18, evening), Blue Wing Olive (#16-18, cloudy days, early morning; spinner fall in evening), Light Cahill (#12-14, evening), (*Isonychia bicolor*, #10-12 has been



Rock snot continues to bloom. Above is *Cymbella janischii* (rock snot) as observed on June 14, 2017 in the Barkhamsted portion of the West Branch Farmington River (see Notes & Notices for more information).

NO FISHING

WITHIN 100 FEET OF THIS SIGN

JUNE 15- SEPTEMBER 15



Connecticut Department of Energy & Environmental Protection
Bureau of Natural Resources - Inland Fisheries Division
www.ct.gov/deep/fishing

To Report Fishing Violations
Call: 1-800-842-4387

Anglers are reminded that the thermal refuge areas on the Housatonic, Naugatuck and Shetucket Rivers are now closed to fishing (as of June 15). These areas will reopen on September 15. There is no fishing within 100 feet of signs indicating such closure at or near the mouths of tributaries to these rivers.

active lately, fast water, evening) and Black caddis (#14-18, early morning & evening). Streamer fishing and nymphing with big stoneflies have been very productive. Streamer patterns to try include White Zonkers, Woolly Buggers (#2-12), Muddlers, Lion Buggers, and Grey or Black Ghosts (#4-10).

TROUT-LAKES & PONDS Summer trout fishing remains quiet as the dearth of reports continue. Fishing has been fair at Crystal Lake (20-30 feet), Colebrook Reservoir and East Twin Lake. Candlewood Lake recently gave up a 3.5 lb brown trout.

CONNECTICUT RIVER. The river continues to be comfortable for fishing and boating, although getting into some of those more hard to get into spots may be getting more difficult, as flows have dropped below typical mid-August levels. **CATFISH** are being caught throughout the river. Night angling in the Hartford to Middletown stretch has been good. We recommend using some really stinky bait and setting up just upstream of a deep "hole". **CARP** fishing on homemade baits has been productive from pre-baited areas. Fish have been caught in the lower portion of the river. Good fishing for **SMALLMOUTH BASS** north of Hartford through Enfield/Windsor. Try top water plugs and 4 inch Mr. Twisters, flyfishing with small poppers, or Wacky Style salted worms in motor oil or chartreuse for these feisty jumpers. The good reports for **LARGEMOUTH BASS** continue, from below Hartford to Hamburg Cove (especially around the Salmon River).

NOTES & NOTICES:

PROPOSED CHANGES TO INLAND FISHERIES REGULATIONS.

DEEP's Fisheries Division is currently proposing to make changes to the Inland sport fishing regulations and to establish trout and salmon stamps.

The proposed changes to the regulations will establish trout and Atlantic salmon stamps, and amend regulations concerning methods and gear types, fishing seasons for several waterbodies, harvest regulations for certain species (common carp, catfish and bullheads), Trout Management Areas, Wild Trout Management Areas, Atlantic Salmon "Broodstock Areas," Trout Parks, and Trophy Carp Waters.

DEEP's proposed changes to Inland Fisheries Regulations (effective 2018) are currently open for public comment until 4:30 pm on August 25, 2017.

For more information on proposed changes, how to comment on them and the public hearing, go to Connecticut's "eRegulations" system at <https://eregulations.ct.gov> or contact the Fisheries Division at Deep.inland.fisheries@ct.gov or by phone at 860-424-3474.

Attention: OUTDOOR GROUPS/CLUBS/BUSINESSES.

DEEP would like to invite you to attend our upcoming **Hunting and Fishing Day**, September 23, 2017 at Cabela's in East Hartford, CT from 10 am to 4 pm.

There is no charge for the event and you can showcase your group, business, organization with a tabletop display.

If you are interested in attending, please contact Andrew Labonte at Andrew.Labonte@ct.gov.

For more information on the event go to: www.ct.gov/deep/huntfishday.

NOTES & NOTICES (continued):

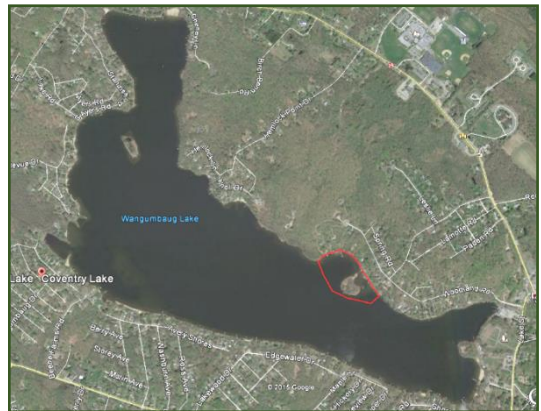
BANTAM LAKE. The annual Waterski Exhibition will be held this upcoming weekend in North Bay on Friday, August 11 (4 pm to 8 pm), Saturday, August 10 (12:00 pm – 5 pm) and Sunday, August 11 (12:00 pm – 5 pm). Boaters should use caution in this area.

BRANFORD RIVER (boat launch). The Branford River state boat launch has reopened.

CONNECTICUT RIVER (Haddam - Essex – paddle craft regatta). A paddle event (kayaks, canoes, row boats, SUP's) is scheduled for **Sunday, August 13, from 8 am to 2 pm** in the Haddam -Essex area. This event is a nine mile one-way race from Eagle Landing State Park (Haddam) south to the Connecticut River Museum (Essex). Boaters should use additional caution in this area.

CONNECTICUT RIVER (invasive species alert). Hydrilla was recently found in the main stem Connecticut River in Glastonbury (near Glastonbury's Riverfront Park & Boathouse). See the Coventry Lake entry below for what river users should do to prevent spread of this invasive plant to other waterbodies.

COVENTRY LAKE (invasive species alert). Hydrilla, a very highly invasive aquatic plant, has been found growing in Coventry Lake. All lake users should take extra care to check and clean their boats (including canoes, kayaks and rowing sculls), trailers, and fishing equipment before leaving the boat launch, or leaving the lakeshore.



Coventry Lake (Wangumbaug Lake) boaters should avoid the area outlined in red to avoid fragmenting and spreading hydrilla. This is only area in the lake where hydrilla has been found.

MUDGE POND. The swim portion of a triathlon will be conducted from 8 am to 9 am on Saturday, **August 12**, in the northern end of the pond, with start and finish at the Sharon Town Beach.

WEST BRANCH FARMINGTON RIVER (invasive species alert). *Cymbella janischii* is a close relative of *Didymo* and has been introduced to the West Branch Farmington River (first noticed in 2011). *C. janischii* is native to the Pacific Northwest and not naturally found on the Eastern seaboard. Currently this type of "Rock Snot" is very abundant and should continue to grow through July. The primary area of the river is from New Hartford upstream to Riverton. Note: *Didymo* is still present primarily in the West Branch above the Still River in Riverton. To help prevent the spread to other rivers and streams, all anglers should take extra care to clean and dry waders that have been in contact with rock snot. We recommend having a pair just for use only in the Farmington River.

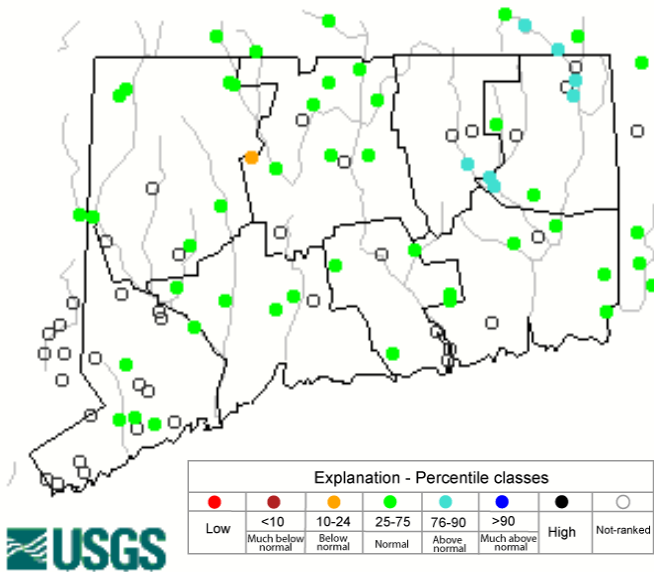
PHOTO CONTEST: Do you have the next Angler's Guide cover shot? Email us your high quality (high resolution) photos at Deep.inland.fisheries@ct.gov and include [photo contest](#) in the subject line. You have until November 1 to send us your entry for the 2018 Angler's Guide Cover contest.

Youth Fishing Passport [Fishing Challenge Scorecard](#): Download the new scorecard for your Youth Fishing Passport Holder on the program web page at www.ct.gov/deep/yfp. Top anglers will receive a great prize pack of fishing gear.

CT FISHIN' TIPS is our monthly e-newsletter dedicated to providing information, tips and pointers about fishing in Connecticut. Get CT Fishin' Tips delivered automatically to your in box by subscribing at www.ct.gov/deep/newslettersubscription

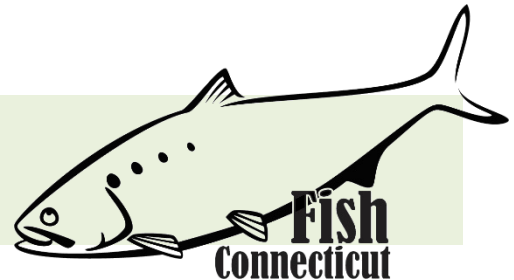
Stream flow conditions

Thursday, August 10, 2017 18:30ET



Data in the state graphic to the left are generated by the United States Geologic Survey (USGS) and are available on line at: <http://waterdata.usgs.gov/ct/nwis/rt> A percentile is a value on a scale of one hundred that indicates the percent of data in the data set equal to or below it. For example streamflow greater than the 75th percentile means only ¼ of the streamflow values were above the value and thus would be considered “above normal”. Stream flow between the 25th and 50th are considered to be “normal flows” and those 25th or less are considered to be “below normal”.

MARINE FISHING REPORT



Surface water temperatures in Long Island Sound (LIS) are in the low to mid 70's °F. Check out the following web sites for more detailed water temperatures and marine boating conditions:

<http://www.mysound.uconn.edu/stationstat.html>
<http://www.ndbc.noaa.gov/>

http://marine.rutgers.edu/mrs/sat_data/?nothumbs=1
<http://www.wunderground.com/MAR/AN/330.html>

Saltwater Fishing at Fort Trumbull State Park

Saltwater Fishing Event: Our annual [CARE](#) and [No Child Left Inside](#) Summer Fishing Event will be held on Saturday, August 12, 2017 (coinciding with free fishing license day). The event will be at [Fort Trumbull State Park](#) from 10 am to 3 pm. Feel free to bring your own fishing gear or you can borrow ours. We will have bait too! A great time will be had by all.

[Youth Fishing Passport](#) holders- This is a great chance for you to “check off” several of the saltwater species on the [“Fishing Challenge Scorecard”](#).

WHALES HAVE BEEN REPORTED IN LONG ISLAND SOUND,

PLEASE CHECK [WHALE WATCHING GUIDELINES.](#)

Note: All marine mammals are protected by the Federal Marine Mammal Protection Act. Following these recommended operational guidelines helps minimize chances of harassing or injuring whales and violating Federal law. Guidelines apply to all large whales from Maine through Virginia, except North Atlantic right whales. It is illegal to approach a right whale within 500 yards (1500 feet) unless granted specific exemption or authorization.

SHARK SPECIES YOU MAY ENCOUNTER IN COASTAL WATERS OF CONNECTICUT: Anglers may catch Sand Tiger and Sandbar (Brown) Shark which are protected and prohibited species and must be released unharmed. **IF YOU DON'T KNOW, PLEASE LET IT GO!** [Coastal shark information.](#)

SEE A TANGLED TURTLE? CALL THE HOTLINE: 1-860-572-5955 ext. 107. This is the time of year when leatherback, loggerhead, green, and Kemp's ridley sea turtles return to northern waters, with many sightings around Long Island Sound.

LICENSE RECIPROCITY & CT RESIDENTS: Anglers please note: Although Connecticut has reciprocity with neighboring states (New York, Rhode Island, Maine and Massachusetts), residents of Connecticut are required to have a CT Resident Marine Waters or all-Waters Sport Fishing License to fish in the Marine District.

STRIPED BASS fishing continues to be fair throughout the Sound. One must reef hop and hopefully get 1 or 2 bass on each reef. The nighttime is the right time. They are feeding on the young-of-year menhaden. Fishing should improve around the waning full moon. Bunker (Atlantic menhaden) schools are still in the major tidal rivers and harbors with stripers following close behind. Look for hovering or diving ospreys which is an indication of bunker (menhaden) schools. The usual striper spots include the Watch Hill reefs, Ram Island Reef in Fishers Island Sound, lower Mystic and Thames River, the Race, Sluiceway, Plum Gut, Pigeon Rip, outer Bartlett Reef, Black Point, the "humps" south of Hatchett Reef, lower Connecticut River, Long Sand Shoal, Cornfield Point, Southwest Reef (outer), Sixmile Reef, Falkner Island area, the reefs off Branford, New Haven Harbor and the upper reaches, Charles Island area, lower Housatonic River, buoys 18 and 20 off Stratford Point, Stratford Shoal/Middle Ground, Penfield Reef, around the Norwalk Islands, and Cable and Anchor Reef.

SUMMER FLOUNDER (fluke) fishing is improving with the influx of peanut bunker and snapper blues forcing the summer flounder to feed in shallow water. There have been some big fish caught off Black Point and Six Mile Reef measuring in the mid to high 20 inch range being reported. **Fort Trumbull is the shore fishing hot spot...there have been some very impressive fluke (24") caught there recently.** Summer flounder spots include the south shore of Fishers Island (Isabella Beach, Wilderness Point), Napatree Point and along the beach, off the Stonington breakwater, mouth of the Mystic River over to Groton Long Point, Twotree Island Channel, Black Point/Niantic Bay including the Bloody Grounds, Sound View Beach, Long Sand Shoal, Falkner Island area, New Haven Harbor, off the mouth of the Housatonic River during the flood tide, and around the Norwalk Islands. **Minimum size is 19 inches and the daily creel limit is 3 fish per person.** [CT Bait & Tackleshop List](#)

BLACK SEA BASS fishing is fantastic. They are carpeted throughout the bottom of the Sound. Fishing over deep water structure/cobble/gravel in 80 to 120 ft around slack tide will produce some trophy-sized "humpbacks" up to 25 " on baited jigs or gulp. It's important to continue to move from structure to structure and fish around slack tide (stay close to the bottom) to find these beautiful and awesome eating fish. They will eat anything you provide them (clams).

SCUP (porgy) fishing is good. These “Reef Slammers” are measuring 10-18 inches (“hubcap size”) in length being reported at every fishing pier, reef or rock pile in the Sound. Try Gardners Island, Milford (Charles Island), Montauk and Niantic (Bartletts and Hatchetts Reef). Porgy fishing has also been reported at these very accessible shore fishing locations: Calf Pasture beach, Jennings and Penfield beach, Seaside Park, (Milford), Bradley Point Park (West Haven), New Haven, **Harkness State Park**, Rocky Neck State Park, **Kimberley Reef (Guilford)**, Meigs Point Hammonasset State Park and **Fort Trumbull State Park**. Locate your favorite [Enhanced Shore Fishing Opportunities](#) for these hard fighting and excellent eating “Reef Slammers”. These “panfish of the sea” are easily caught on sandworms/cut squid or any other small piece of bait. Contact your [local bait and tackle shop](#) for updated fishing information.

BLUEFISH fishing has improved on the major reefs and rip areas. Vertical jigging diamond jigs in deep water locations and using fresh bunker chunk baits on three way rigs in shallow water has been the ticket. Typical bluefish fishing spots include the reefs off Watch Hill, the Race, Thames River, Sluiceway, Plum Gut, Pigeon Rip, lower

Connecticut River (CT DEEP Headquarters Fishing Pier), Long Sand Shoal, Sixmile Reef, Falkner Island area, New Haven Harbor and upper reaches, lower Housatonic River, buoys 18 and 20 off Stratford Point, Stratford Shoal/Middleground, Penfield Reef, and Cable and Anchor Reef. **SNAPPER BLUEFISH** fishing is improving daily in the tidal creeks and rivers. The DEEP Marine Headquarters fishing pier and **Fort Trumbull fishing pier** are two great spots to bring kids fishing & crabbing. Look for the schools of “peanut” bunker and you will find the snappers.

BLACKFISH (TAUTOG) fishing is pretty good this summer. There are plenty of these “Reef Bullies” around the local reefs and pilings. The daily creel limit is 2 fish per person and the minimum size is 16 inches. Tautog love eating crabs and mussels...try green, Asian and hermit crabs for bait. Look for “Togs” over shellfish beds, pilings with mussel beds and rock (reef) piles (10 to 45 ft). **The daily creel limit is 2 fish per person and the minimum size is 16 inches.**

STRIPED SEAROBIN fishing continues to be steady for this “hardhead fish with spines and large pectoral fins”. Also, called “**Poor-Man’s Lobster**”, these fish are very common especially when bottom fishing at many of Connecticut’s shore fishing sites. With fish measuring over 22 inches and “barking up a storm” (grunting noise they make when handling them). They love sandworms, squid and any live or dead bait. They are also very good to eat. There are videos on how to clean/fillet these tasty eating fish.

BLUE CRAB fishing is good. Many crabs are molting and growing larger as we speak. Time to get out and try your favorite spot and enjoy the scenery and catch some crabs for dinner (crab cakes). There are a lot of smaller under-sized crabs out there. **Remember... all egg bearing females must be released without avoidable injury.** Minimum carapace length is 5 inches for a hard shell crab. Please contact your local bait and tackle shop for most updated information (local hot spots), legal crab traps and bait to use for your fun-filled crabbing. Legal gear types include: scoop (dip) net, hand line, star crab trap, circular (topless) trap not exceeding 26 inches in diameter. Maryland Style crab traps are prohibited. **Chicken with the skin on it (along with a long handle net) is the preferred method to capture these tasty crabs.** [Blue Crab Fact Sheet.](#)

SHORE FISHING SPOTS & TIDE TABLE INFORMATION

To find a saltwater shore fishing spot close to where you live, go to the following website:

<http://www.lisrc.uconn.edu/coastalaccess/>.

For **Enhanced Opportunity Shore Fishing** sites and other fishing information including a site map go to the following website

<http://www.depdata.ct.gov/maps/saltwaterfish/map.htm>.

Please see page 64 of the [2017 CT Angler’s Guide](#) for CT tide information.

CAUGHT A TROPHY FISH - MARINE TROPHY FISH AWARD PROGRAM AFFIDAVIT

NOTABLE CATCHES –

<i>Species</i>	<i>Length (in.)</i>	<i>Weight (lbs)</i>	<i>Angler</i>
American Eel	40"	5 lb 3 oz	Alyssa Zuppe
Smooth Dogfish	42"	9 lb 2 oz	Jennifer Zuppe
Smooth Dogfish	47"	C&R	Joselin Braun
Tautog	26"	11 lb 6 oz	Jennifer Zuppe
Blue Crab	8.5"	1lb 1oz	Alyssa Zuppe

For Current Connecticut Recreational Fishing Regulations: Anglers should consult the 2017 Connecticut Anglers Guide which is now available at most Town Clerks Offices, DEEP offices and at tackle stores selling fishing licenses. Current regulations, electronic versions of the Angler's Guide and additional information can all be accessed on the DEEP website at: www.ct.gov/deep/fishing.

PLEASE CALL 1.800.842.4357 TO REPORT FISHING VIOLATIONS.

The Connecticut Department of Energy and Environmental Protection is an Affirmative Action/Equal Opportunity Employer that is committed to complying with the requirements of the Americans with Disabilities Act. Please contact us at (860) 418-5910 or deep.accommodations@ct.gov if you have a disability and need a communication aid or service; have limited proficiency in English and may need information in another language; or if you wish to file an ADA or Title VI discrimination complaint.

DEEP WEEKLY Fishing Report



**Connecticut Department of
ENERGY & ENVIRONMENTAL PROTECTION**

79 Elm Street, Hartford, CT 06106

www.ct.gov/deep